

# 2022-2024 County Aging Plan Instructions: Context

The Context Section sets the stage for the aging plan and describes the issues to be addressed in the rest of the document. The context conveys a clear understanding of the current and future service and support needs of the older residents, and the issues, challenges and opportunities facing the Aging Unit. When responding to this section please detail the sources of information used to develop this plan. (Sources may include public health data/information, hospital information/data, census data and tribal and/or county surveys).

The aging plan context answers these questions:

- Who are the current and future older persons?
- What needs have been identified?
- How is the aging network organized to support older persons
- How are older persons supported by the Aging Unit and ADRC through programs and services?
- What are the critical issues/trends and future implications?
- Describe present and future challenges for delivery of aging services in the community
- What are the resources and partnerships? (Describe how resources are shared and how partners interact to meet the needs of older adults?)

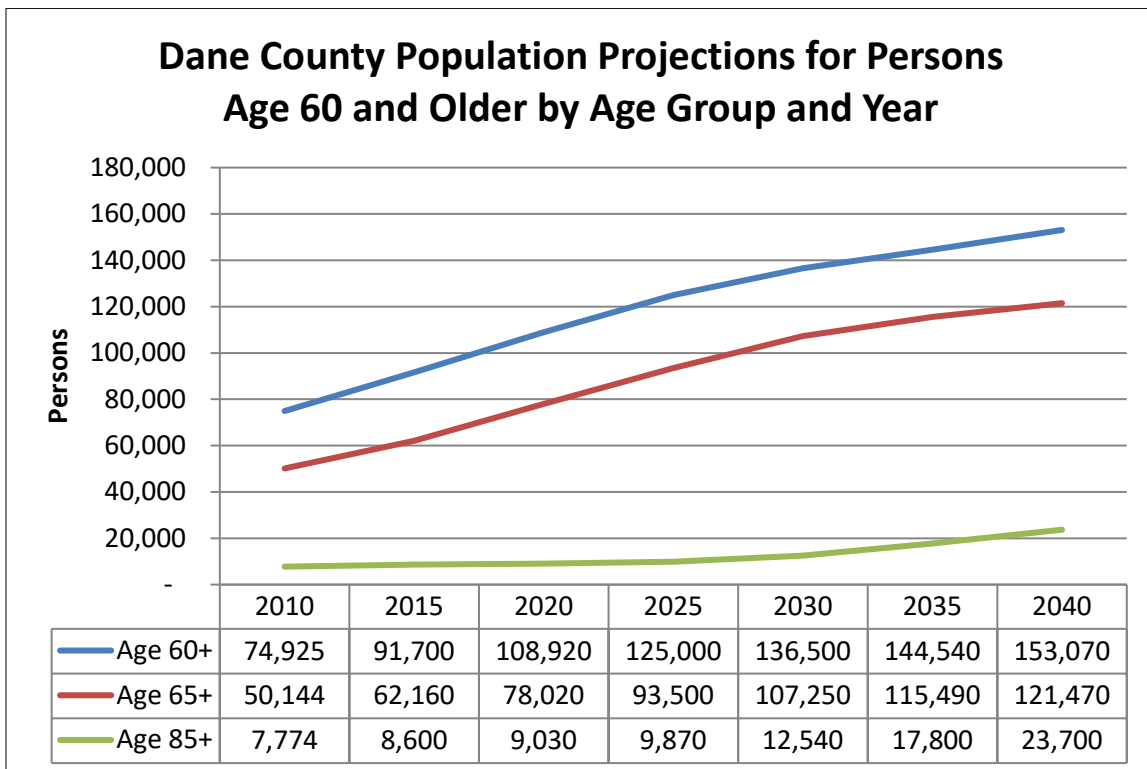
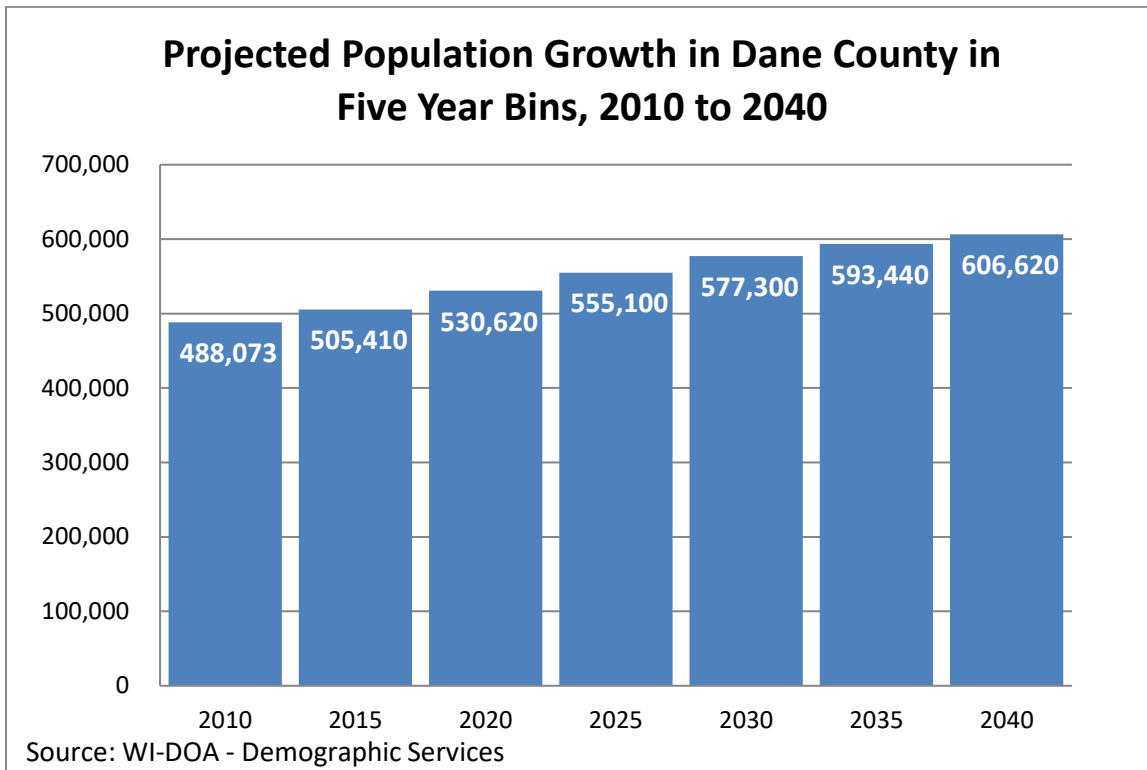
The Context Section should include:

- Demographic Information
  - Demographic trends brief narrative
  - Population Projections by age (graph)
  - Composition of county Population 60+ (graph)
  - Diversity and ethnicity and participation in aging programs and services (graph)
  - Age group estimates 60-69,70-79, and 80+ (optional)
  - Population density of older adults within the county (optional)
  - Services available to consumers through the Aging Unit
  - Needed additional services; Examples: affordable housing, transportation, and mental health services, etc.
  - Opportunities or plans to address health equity/racism

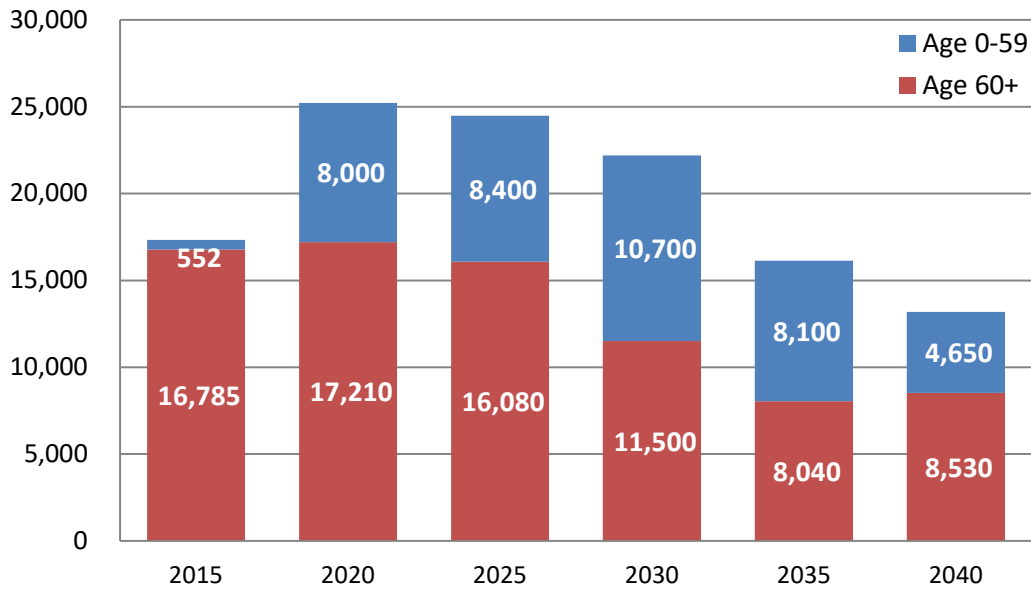
Resources:

- Attached document entitled “Data Resources for the Context Page Eric Grosso”)
- Attached document entitled “Older Population 10 Year Age Groups”
- Attached document entitled “Populations Projects thru 2040”
- Review the local County Health Plan. Information from your local County Health Department can be assistive with Aging Plan development: <https://www.dhs.wisconsin.gov/lh-depts/counties.htm>

Ari—for reference, the 2019-2021 Dane County Aging Plan included the following graphs/charts:

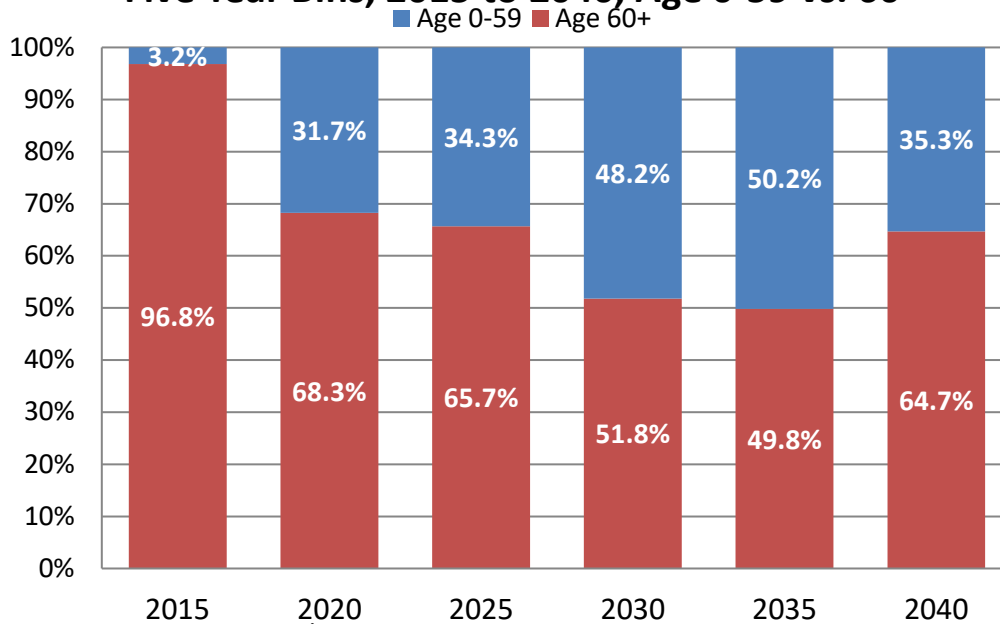


### Projected Population Growth in Dane County in Five Year Bins, 2015 to 2040, Age 0-59 vs. 60+



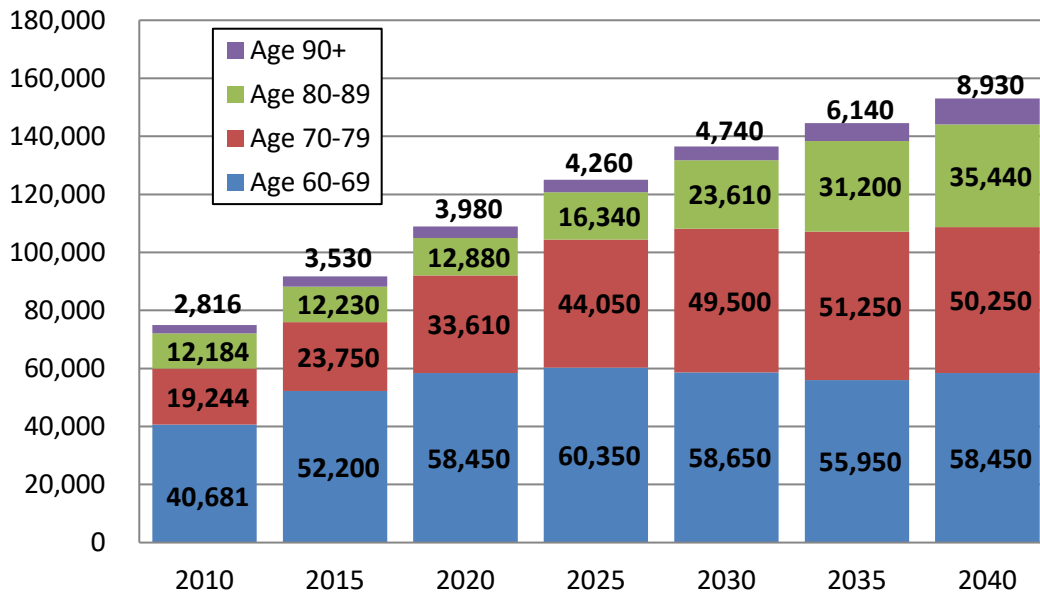
Source: WI-DOA - Demographic Services

### Projected Population Growth in Dane County in Five Year Bins, 2015 to 2040, Age 0-59 vs. 60+



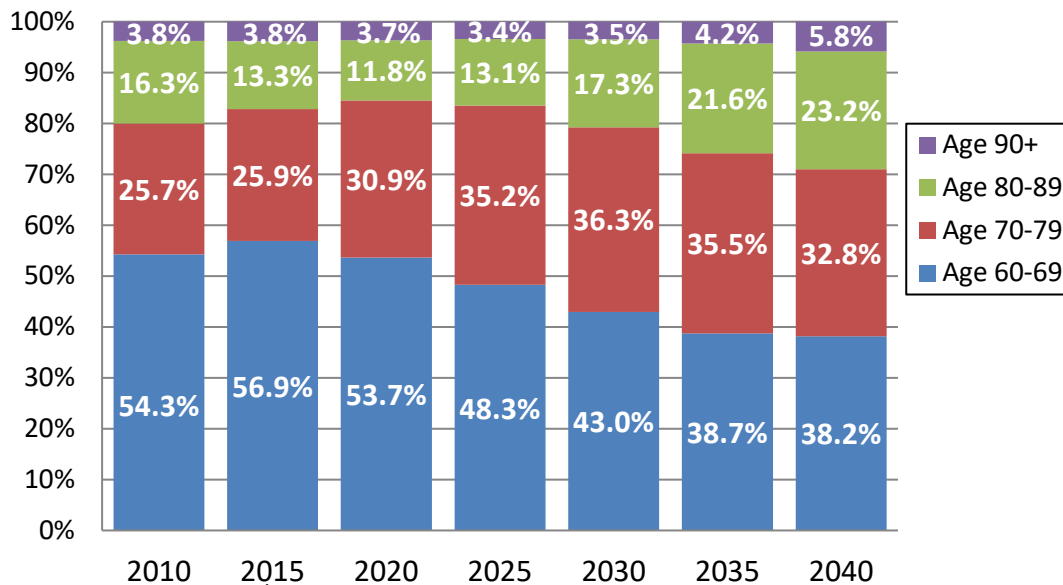
Source: WI-DOA - Demographic Services

### Projected Population Growth in Dane County Age 60+ by Age Group, 2015 to 2040



Source: WI-DOA - Demographic Services

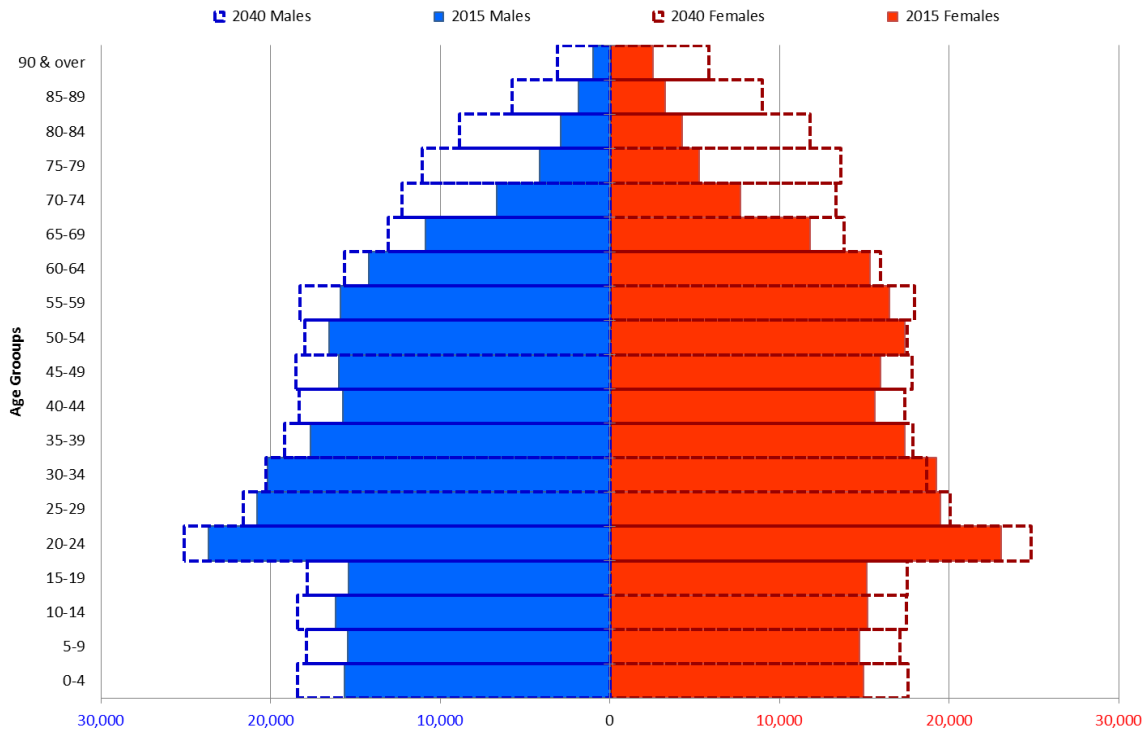
### Projected Population Growth in Dane County in Five Year Bins, 2015 to 2040, Age 60+



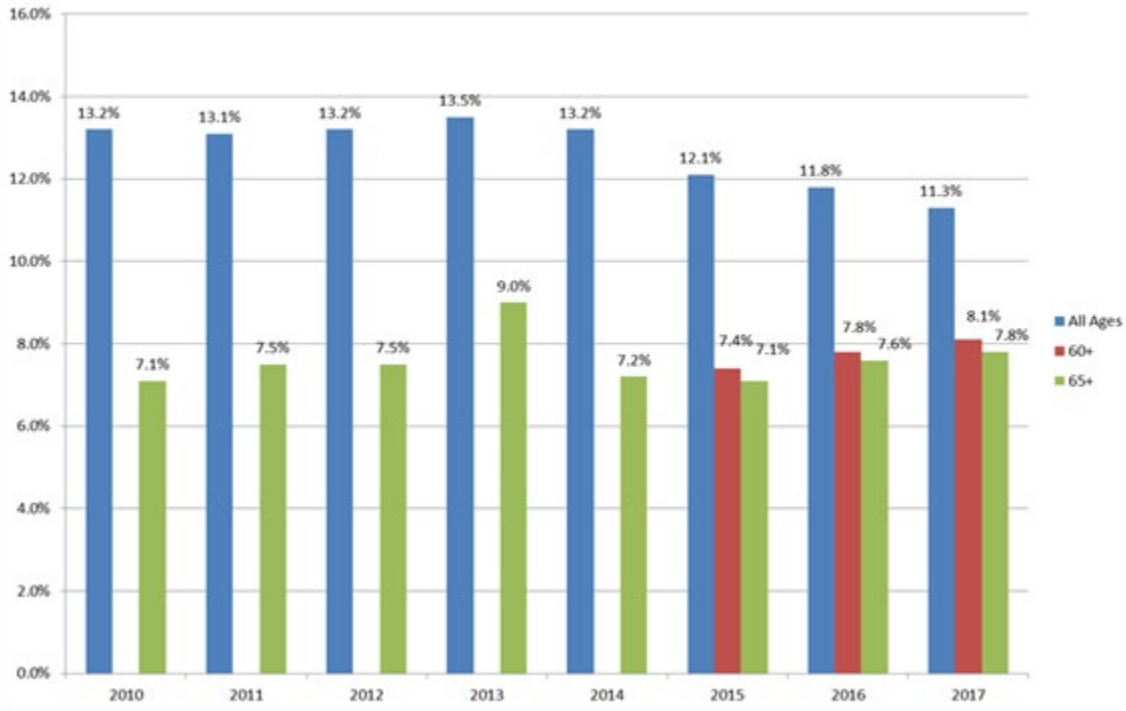
Source: WI-DOA - Demographic Services Center



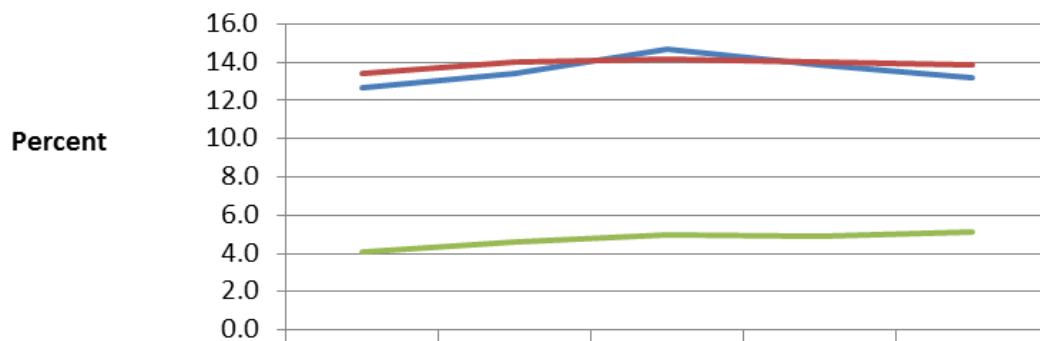
## Dane County Age-Sex Pyramid, 2015 and 2040 Population Projections



## Poverty Rate by Age, WI, 2010-17 US Census, ACS

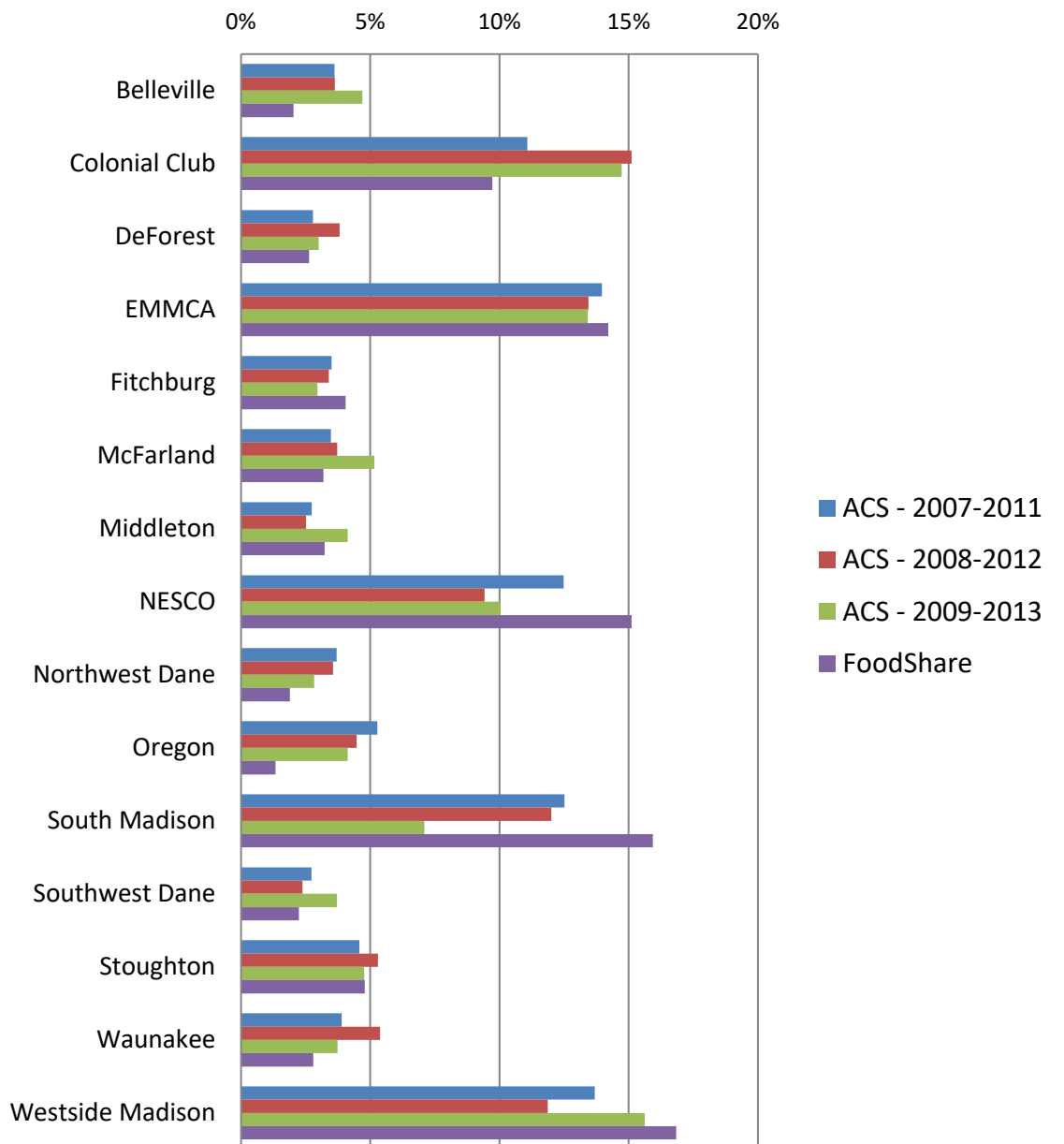


## Poverty Status in the Past 12 Months by Age Group: Dane County



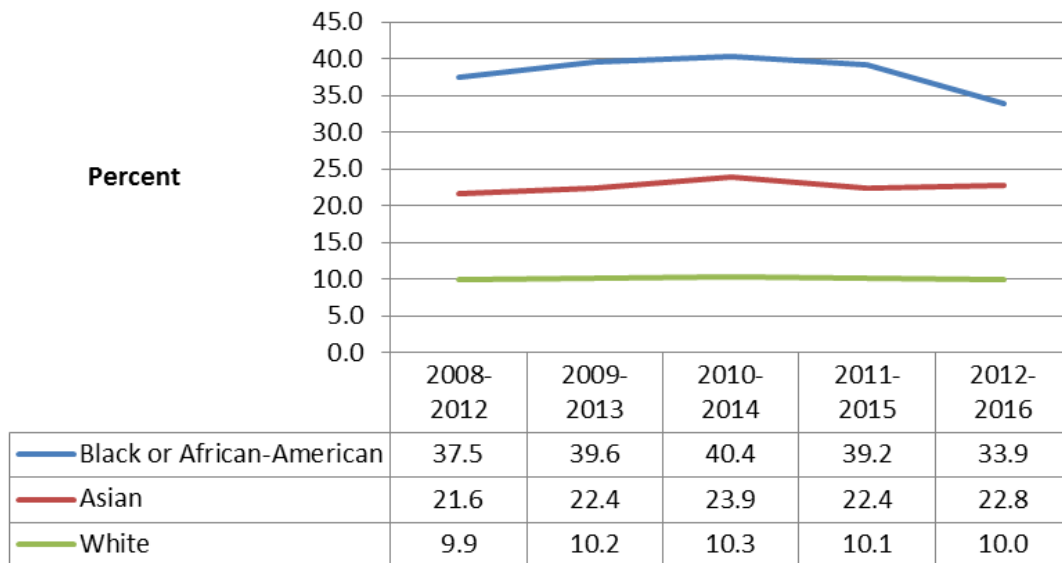
	2008-2012	2009-2013	2010-2014	2011-2015	2012-2016
Under 18 years	12.7	13.4	14.7	13.9	13.2
18-64 years	13.4	14.0	14.2	14.0	13.9
65 years and over	4.1	4.6	5.0	4.9	5.1

## AAA Case Management - Elderly Poverty Data

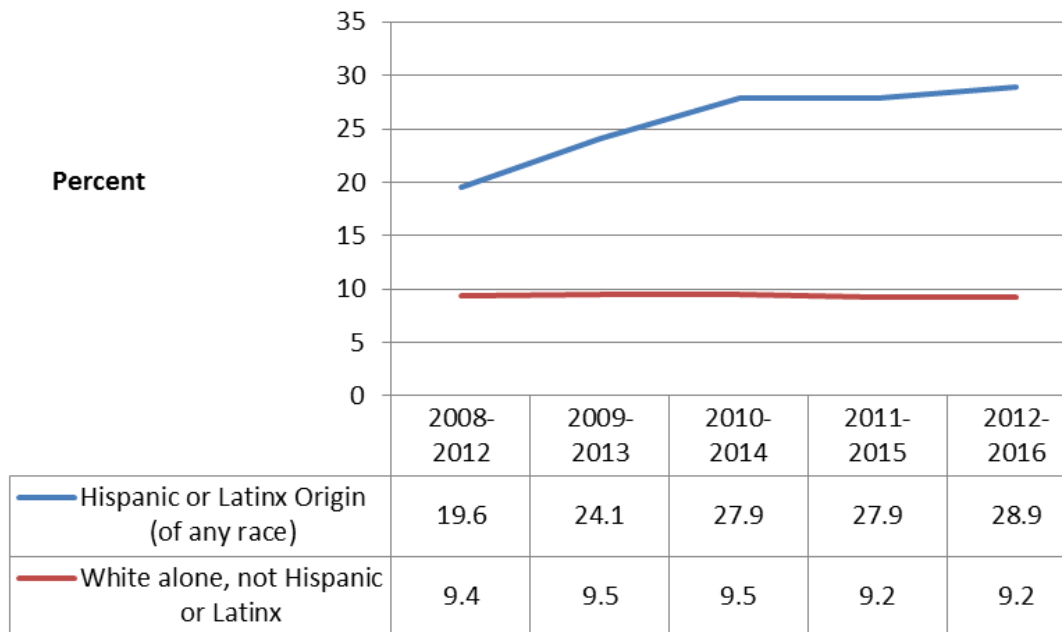




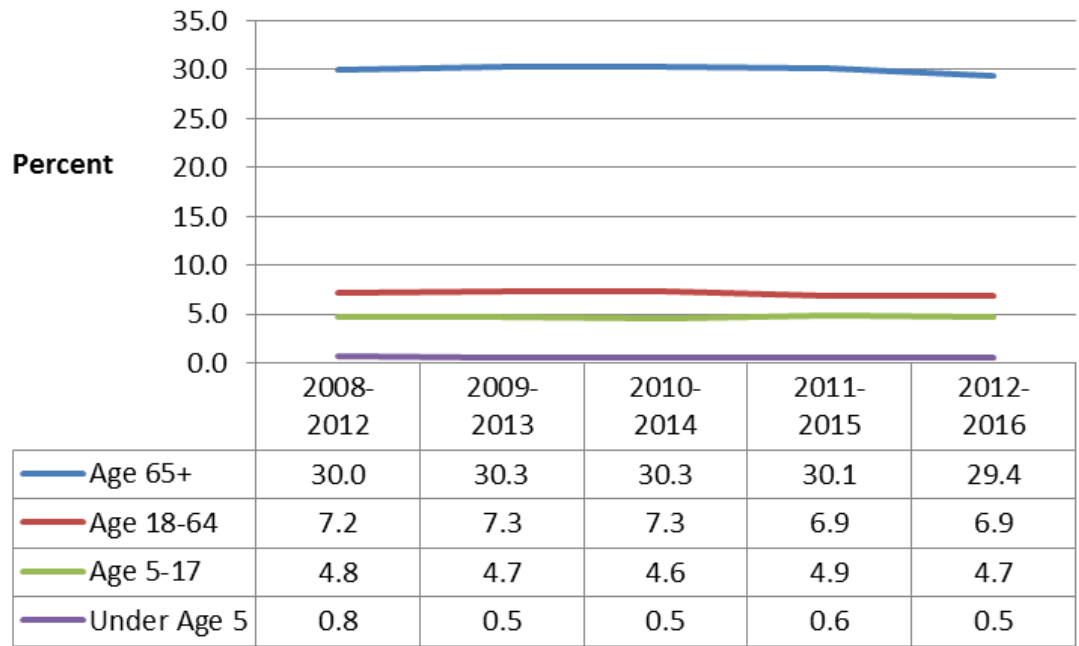
## Poverty Status in the Past 12 Months by Race: Dane County



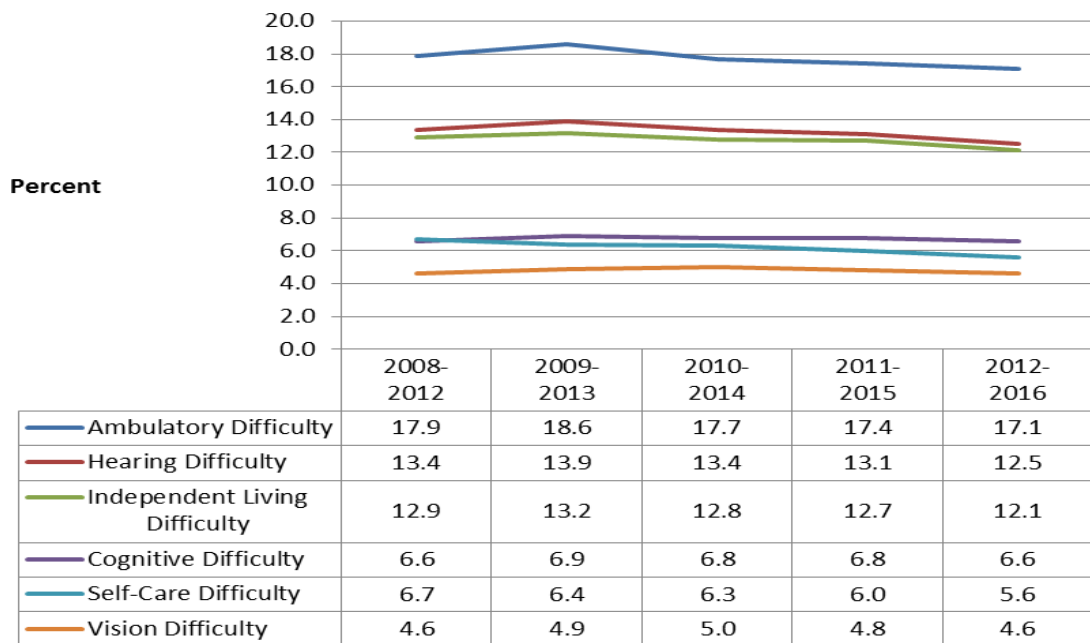
## Poverty Status in the Past 12 Months by Ethnicity: Dane County



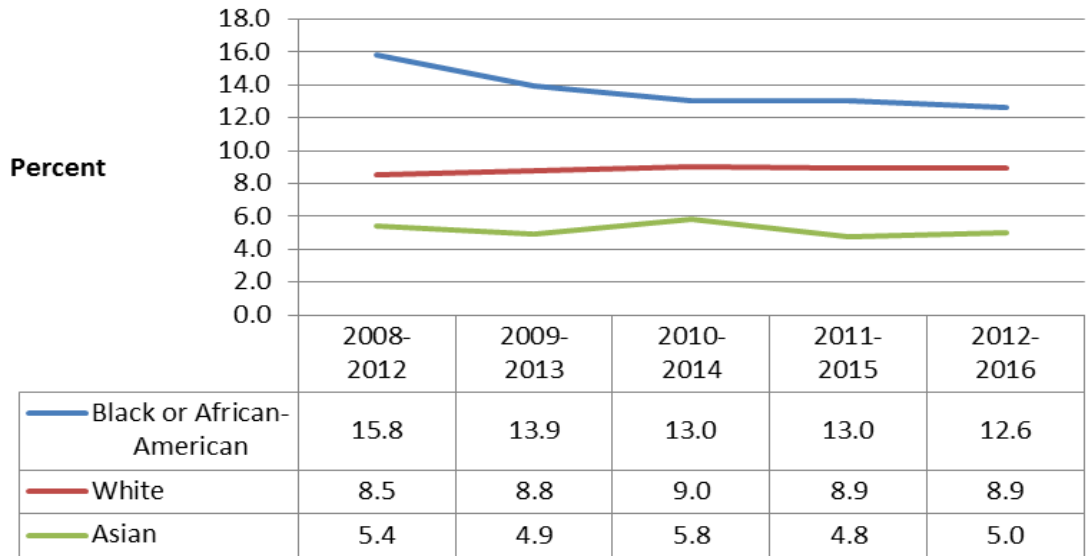
## Percent of Population with a Disability by Age Group: Dane County



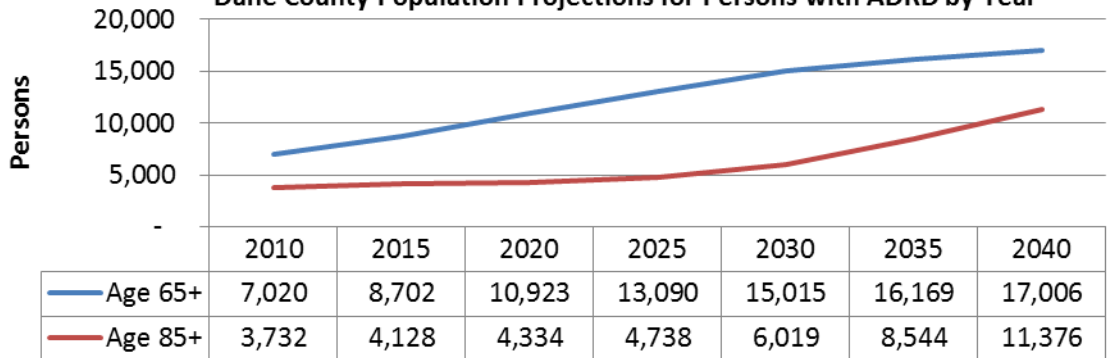
## Percent of Persons Age 65 and Over with a Disability by Type: Dane County



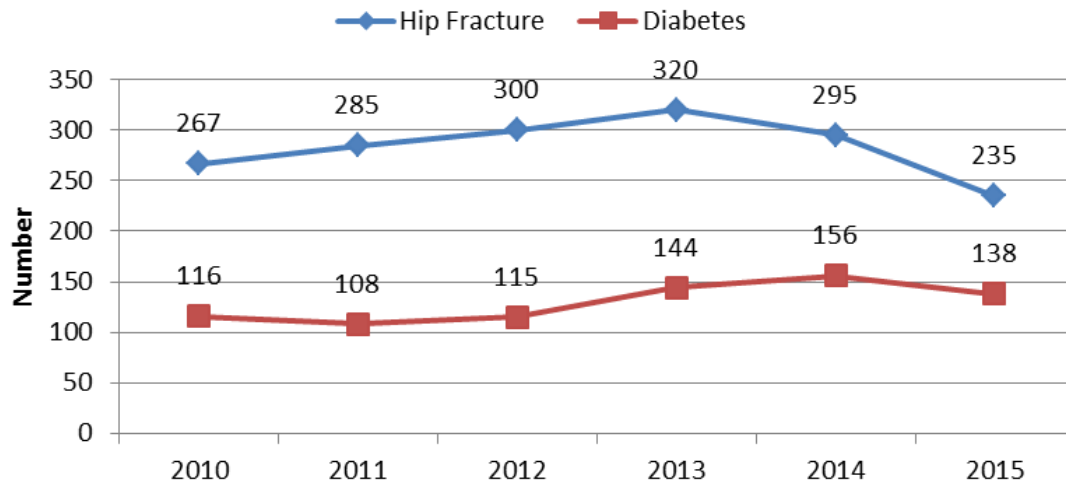
## Percent of Population with a Disability by Race: Dane County



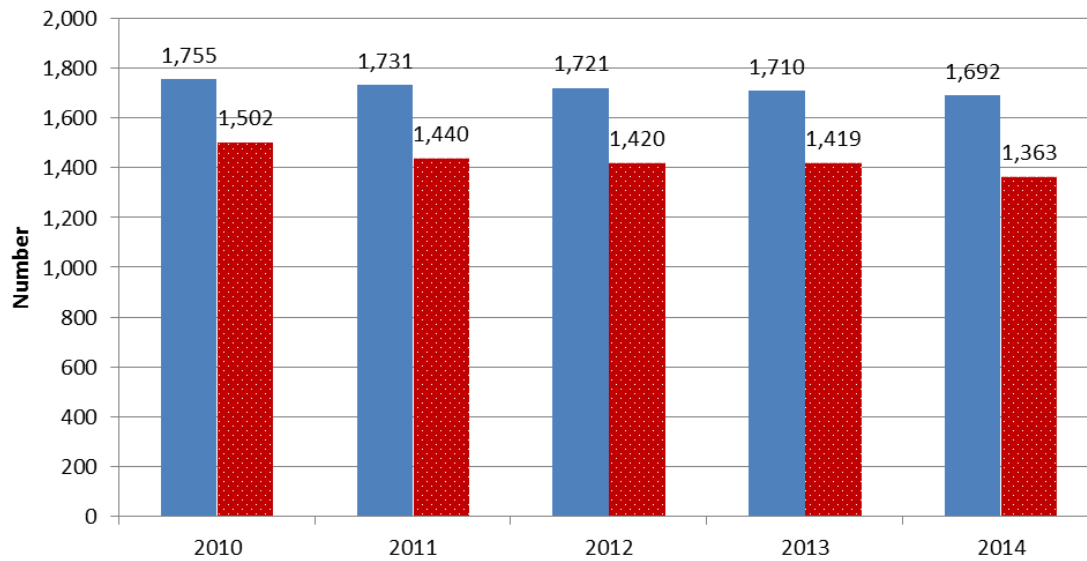
### Dane County Population Projections for Persons with ADRD by Year



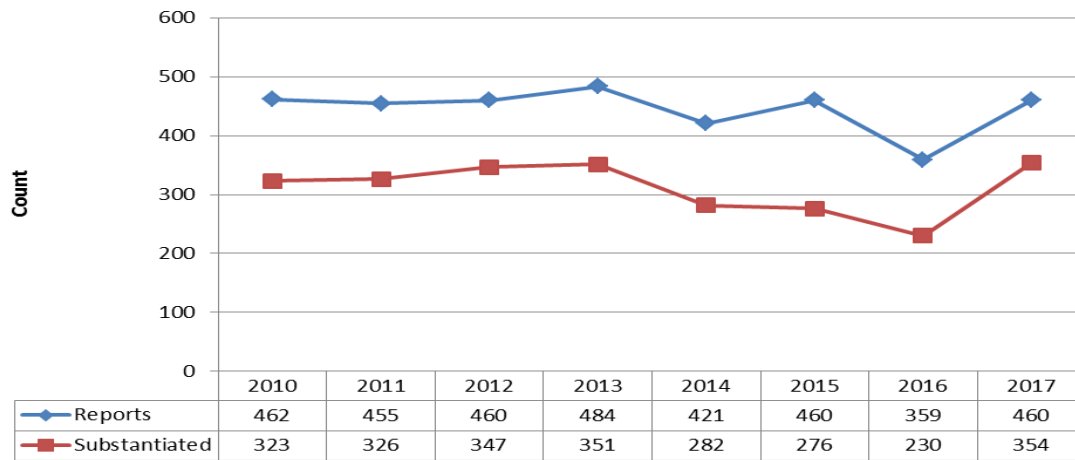
## Select Hospitalization for Persons Age 65 and Older in Dane County



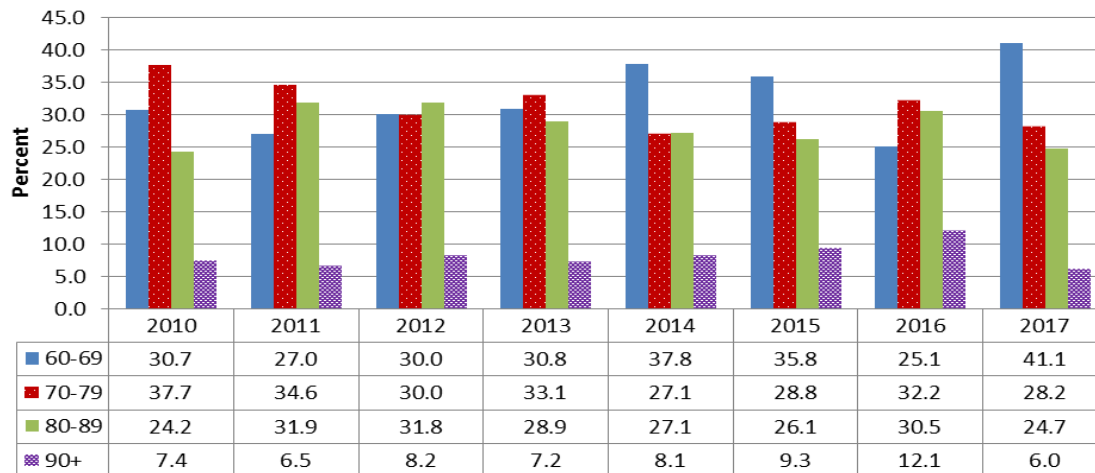
## Nursing Homes in Dane County - Licensed Beds and Residents on December 31 2010-2014



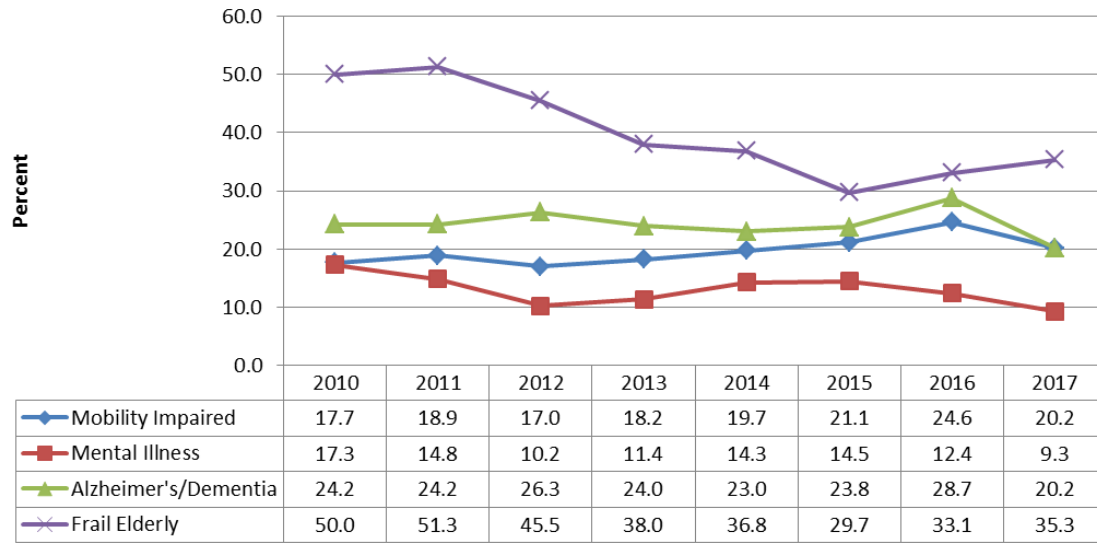
### Number of Elder Adults-at-Risk (Age 60+) Abuse and Neglect Reports for Dane County by Year



### Percent of Elder Abuse Reports by Age Group of Adult-At-Risk - Dane County



### Percent of Elder Abuse Reports by Select Characteristics of Adult-At-Risk - Dane County



### Percent of Elder Abuse Reports by Select Characteristics of Alleged Abusers - Dane County

